



34 Port Hedland Road Edmondson Park, NSW

4 2 2

Immaculate and pristine home

This impressive single-level family home with timeless elegance and located in a highly sought-after suburb of Edmondson Park. Offering a perfect fusion of serenity, comfort, and convenience, this immaculate family home offers the ultimate lifestyle within easy reach of an array of local amenities. Located only 15 minutes from Liverpool CBD, approximately 20 kilometres to the future Badgerys Creek Airport precinct.

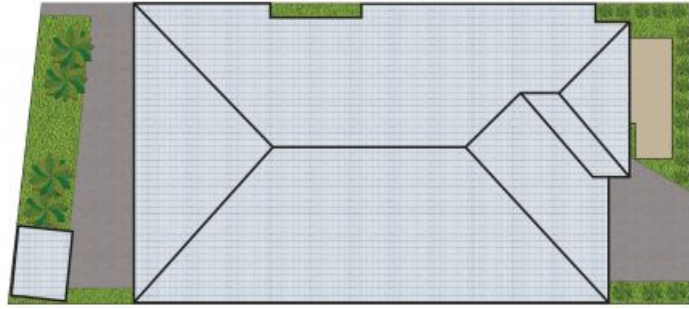
- Showcasing a selection of living spaces including family, dining and living rooms
- Four bedrooms, ensuite and walk-in robe to master bedroom, built-in robes two and walk-in robe to fourth bedroom
- Sleek modern kitchen with CaesarStone benchtops, glass splashback, 900mm cooking appliances and walk-in pantry
- Undercover alfresco area with electric café blinds for privacy leading into paved low maintenance yard

For more details please visit <https://www.gyproperty.com.au/8066944>



Anna Younan

0416 053 838



Scale in metres, indicative only. All information contained herein is obtained from sources we believe to be accurate, we cannot guarantee its accuracy. Interested persons should make and rely on their own enquiries.

34 Port Hedland Rd, Edmondson Park NSW 2174



34 Port Hedland Road, Edmondson Park, NSW

