



6 Hoxton Place Spring Farm, NSW



### House and Granny Flat - excellent investment opportunity

Nestled in a sought-after enclave of Spring Farm, this contemporary and stylish dual home presents excellent living possibilities for two families or an investment. Showcasing high quality build with contemporary inclusions and fittings throughout. Ideally located within a short drive to shops, schools and parks.

#### Main House

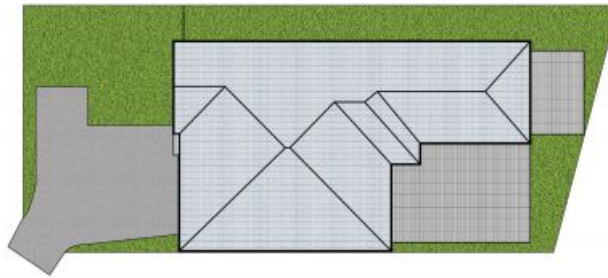
- Four bedrooms, master bedroom with ensuite and walk-robe
- Three further bedrooms with built-in wardrobes to all
- An open plan living and meals area with stunning feature wall with built-in media unit
- A stunning sleek kitchen with 40mm stone benchtops and splashback, plus premium appliances
- Sumptuous bathrooms with floor-to-ceiling tiles, free standing bath in the family bathroom
- Two bedrooms, built-in robes to main bedroo

For more details please visit <https://www.gyproperty.com.au/8081230>



**Anna Younan**

0416 053 838



Main Residence



0 1 2 3 4 5 SCALE (METRES)

Scale in metres. Indicative only. All information contained herein is obtained from sources we believe to be accurate, we cannot guarantee its accuracy. Interested persons should make and rely on their own enquiries.

6 & 6A Hoxton Pl, Spring Farm NSW 2570



6 Hoxton Place, Spring Farm, NSW

