



31/17-25 Rudd Rd LEUMEAH, NSW



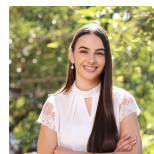
So close to public transport!

Set in a secure complex and positioned on the Ground floor, this apartment promises lifestyle excellence and ultra convenience in a prized locale. Unit bathed in light and within proximity to Campbelltown mall, schools and Leumeah train station.

Features Include:

- > Two well proportioned bedrooms with oversized windows to allow natural light
- > Open plan living and dining area
- > Carpeted flooring in main living and bedrooms
- > Well maintained kitchen and bathroom
- > Internal laundry and private undercover parking
- > Ground floor setting in secure complex

For more details please visit <https://www.gyproperty.com.au/8161722>



Emily Fenech

0401 287 878



(NOT IN POSITION)



GILBERT + YOUNAN

31/17-25 Rudd Rd, Leumeah



The floor plan is not to scale, measurements are indicative and in metres. Exterior elements are not in position. Plans should not be relied on. Interested parties should make and rely on their own enquiries. All other information provided has been collected from reliable sources but cannot be guaranteed for accuracy.

